

happenings

- Newcomer's Pot Luck Dinner - end of May, location to be determined
- 2nd Annual Ice Cream Social, Father's Day, June 17, Mansion Beach
- Dudley Pond Fun Run, Sunday, September 9

- Board Meetings are held the first Thursday of the month. Call Sherry Fiust at 508-647-1544 for the location.

Let the planning begin for....

The 11th Annual Dudley Pond Run/Walk and Kids Run

Sunday, September 9, 2007

This is the Dudley Pond Associations biggest fundraiser of the year! We can use your help! There are volunteer opportunities before, during and after race day. Help us by gathering sponsors, folding and preparing flyers for mailing, selling raffle tickets, painting signs, handing out ribbons at the kid's run, helping at refreshment tables on race day, or delivering prizes to raffle winners after the race is over - There is lots to do - can you help?.

Become a volunteer and make an important contribution toward the care and maintenance of our beautiful pond. Monthly planning meetings begin in March.

Contact Co-Chairs:
Linda Smith at 508-655-1923

ljs12@verizon.net
Karen Lowery 508-653-3450
kclowery@gmail.com



The Dudley Pond Association
P.O. Box 5114
Wayland, MA 01778



Non-Profit U.S.
Postage
PAID
Wayland MA
Permit No. 73

DPA Notes

DUDLEY POND ASSOCIATION

newsletter Spring 2007



Dear Members and Friends of the DPA:

We have been blessed with many gifts this winter. Cold weather finally arrived and Dudley Pond is a winter landscape of beauty and is providing fun opportunities for fishermen, hockey players, and ice skaters. We have also reaped the benefits of all the hard work of the Wayland Surface Water Quality Committee (WSWQC) to establish a line item for Dudley Pond care and maintenance in the town budget for Fiscal Year 2008. The Finance Committee approved \$40,000 for Wayland's Great Ponds which includes:

1) Nutrient sampling/analysis and the development and implementation of a plan for nutrient reduction (Dudley Pond will receive the greater part of the funds due to our serious infestation)

2) Public Education to increase awareness of problem nutrient flows

3) Dudley Pond Weed Control via hand pulling at Mansion Beach, Rocky Point, and the end of Priscilla Path

Getting approval for this new line item in the annual budget is a huge achievement for WSWQC. This is an increase from \$5,000 a year to \$40,000 in a time of town wide budget constraints. We have finally achieved our goal of getting the Town of Wayland to invest in the care of our water resources. Please thank the members of the WSWQC for their hard work and persistence!

Toni Moores, Co-Chair
Bob Goldsmith, Co-Chair
Jackson Madnick
Lisa Newton
Tom Largy

Involving all DPA members and abutters in the decisions of how to best use our financial resources is one of the biggest challenges that I have faced as President. The DPA Board and several active members have spent many hours in discussion with the WSWQC developing a weed management plan. I am committed to making these decisions in a transparent manner and urge you to get involved.

How do you get involved? Attend the monthly Board meetings which are held the first Thursday of every month, usually at my house. Attend the semi-annual membership meeting on March 25. Please feel free to contact me directly at 508-647-1544 or cfiust@comcast.net if you have questions or concerns.

Sincerely,

Sherry Fiust
DPA President

Dudley Pond Officers 2006

President - Sherry Fiust
First Vice President - Karen Lowery
Second Vice President - Brian Chichella
Treasurer - Jamie Pierce
Secretary - Marilyn Darack

Bi-Annual Spring Meeting, March 25, 5PM, Senior Center, Wayland Town Building



Spring is coming early this year! At least the Dudley Pond Association Spring Meeting is!

We've decided to have the DPA Spring Membership Meeting early this year in order to provide information on the Pond Circulator project. SWQC expects to install the Pond Circulators at the end of March, assuming that the ice is out.

Agenda:

• **Informational Session on the Pond Circulator Project by the Surface Water Quality Committee.**

• **Weed Management Plan 2007 Board Recommendations & Discussion.**

• **2007-2008 Board Members Election.**

Board Elections

Candidates for the up coming one year term are:

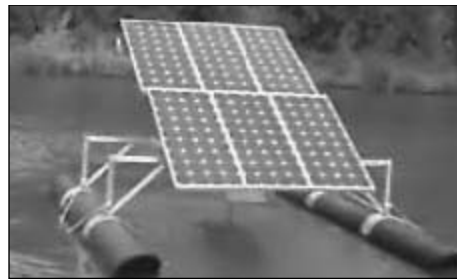
- President, Sherry Fiust
- First Vice President, Bob Smith
- Second Vice President and Social Chairperson, Brian Chichella
- Treasurer, Jamie Pierce
- Secretary, Marilyn Darack

Please come and cast your vote!



Dudley Pond Circulator Testing News

Three Eco-Guide Sungo 001 pond circulators will be installed in the northern lobe of Dudley Pond as part of a program to test the effectiveness of pond circulators for the management of the invasive pond weed Eurasian Milfoil. The final location of the three test circulators has not been selected, but will be chosen so as not to interfere with the ongoing testing of milfoil weevils. The circulators, one of which is pictured below, are approximately 10 feet long, 6 feet wide, with approximately 2 feet below the water and 4 feet above the water and will be anchored to the bottom of the pond via two anchors per circulator.



The solar powered circulators very slowly circulate pond water by means of a small electrical motor and an impeller that turns at approximately 125 revolutions per minute. There are a number of theories as to why circulators preferentially discourage the growth of invasive weeds such as milfoil. The most popular of these theories is that by circulating the pond water and by maintaining dissolved oxygen throughout the water column and in the root zone of the plants, the nutrients necessary for the growth of milfoil are chemically altered and therefore less available for the milfoil. Circulators are less effective in pond and lakes that receive large amounts of nutrients from surface water runoff and failed septic systems.

As a result other programs will be undertaken to identify and eliminate sources of nutrients in the watersheds of all of the Town's "great" ponds. A series of chemical tests,

underwater pictures and videos will be undertaken throughout the 18 month circulator test period to evaluate the effectiveness of the circulators in Dudley Pond. Realistically positive results from the circulators, if any, will not be apparent until the summer/fall of 2008. If the circulators are judged to be effective in controlling milfoil, the installation of additional circulators will be considered for the control of milfoil throughout Dudley Pond and at other Wayland ponds as the need arises.

The three circulators will have night lights to minimize the possibility of nighttime boat collisions and cages around the impellers to discourage curious swimmers; however, vigilance by Dudley Pond home owners near the circulators will be necessary to minimize vandalism.

Maintenance of the circulators is expected to be minimal and will be performed by members of the Wayland Surface Water Quality Committee and Eco-Guide the vendor of the circulators. Installation of the three circulators in the Pond is expected sometime in late March 2007 or after the ice melts and will be evaluated for 18 months. This test of invasive weed management is the result of the efforts and cooperation of the Wayland Surface Water Quality Committee, Dudley Pond Association, the Wayland Community Preservation Committee, the Wayland Conservation Commission and the Wayland Finance Committee.

Grant Update

Milfoil Weevils were introduced in Dudley Pond in the summer of 2006. In mid July GeoSyntec will physically inspect the two stocking sites to see how many weevils appear to be present and how the plants look. This is the first inspection of a three year growing season. At the stocking location and the control site, the abundance and condition of all aquatic plant species will be recorded, along with other qualitative information (i.e., unusual sediment conditions). Next, quantitative data will be gathered to determine milfoil stem density and weevil population density. At each site, three transect lines parallel to each other and perpendicular to the shore will be used to collect milfoil samples for analysis of weevil density, stem density and weevil-related damage to the plants. After monitoring for each season is completed, a report summarizing the weevil stocking and monitoring results will be submitted to DEP.

The Dudley Pond Association depends upon its dues paying members for its basic funding. It is critically important that we all pitch in to preserve and enhance our special life style here on the pond. It is only right that, since we all share in the enjoyment of the pond, we must also share in its care and maintenance. Please make sure that your dues are current. Also, please invite any new neighbors to come along to the Spring Meeting and to join the DPA.

Dues categories:

Adult: \$15
Youth (Age 16-18) \$10
Sponsor: \$75
Life Member: \$200



Checks should be made payable to Dudley Pond Association and sent to P.O. Box 5114, Wayland, MA 01778-4137. If you prefer, you can get further information and download a membership form from our website, www.dudleypond.org.

Remember, all dues are tax deductible

A Neighborhood Guide for Care and Protection

Ponds, lakes and rivers enhance our daily lives. They provide for many recreational activities, such as, boating, fishing and swimming. They also enhance the value of the surrounding property and provide aesthetic values and habitat for wildlife. However, our day-to-day activities near ponds, lakes and rivers can have detrimental effects. This publication is your Guide to the care of ponds, lakes and rivers, helping assure we all do our part to protect and preserve these resources for years to come.

What are the Water Quality Problems of Pond, Lakes & Rivers?

Although Wayland's surface waters are safe for swimming and boating, they are experiencing increasing levels of pollution by sediments, pathogens and fertilizers that promote algae and aquatic weeds. Weeds in turn can reduce oxygen levels, damage fish populations, and also reduce the clarity of the water, which can affect swimming and other recreational activities. Other pollutants of concern are human bacteria, oils and grease and heavy metals.

What Causes Water Quality Problems?

Rainwater that falls on or is used in the Wayland pond and lake watersheds runs through street drains or through the ground and gets into lakes, ponds and streams. These sources of water include storm water (from yards, streets and developed areas) erosion and sediments from development sites where vegetation has been disturbed, use of fertilizers and pesticides on lawns and landscapes and septic system discharges. In this way our ponds, lakes and rivers receive runoff from yards, streets, construction sites, etc. Our ponds, lakes and rivers receive dog wastes, waste oils, lawn fertilizers/pesticides and anything else we dump on our streets.

In Massachusetts, urban runoff accounts for a major portion of the pollution: 85% of the phosphates and 99% of the sediments entering our ponds and lakes.

Why are aquatic weeds a problem?

Over the past 10 to 15 years a specific problem has emerged in ponds and lakes: the spread of a non-native, invasive aquatic plants, the most common, is called Eurasian Milfoil. This is a major concern for Lake Cochituate and Dudley Pond. Milfoil, which spreads by fragmentation, was most likely introduced to ponds and lakes by a careless discharge of a home aquarium or transported from nearby infested lakes by boats or waterfowl. Left unchecked Milfoil will take over a pond or lake, resulting in a thick mat of smelly decaying weeds that will significantly detract from the value of the Ponds and Lakes as community resources and the value of surrounding property.

Non-native, invasive weeds: (a) Are worsened by nutrients (fertilizers), (b) have to be addressed by hand or mechanical harvesting, hand pulling and, if all else fails, application of herbicides, and (c) spread quickly.

What You Can Do to Reduce Pollution:

Hazardous Household Wastes

Just 4 quarts of oil can contaminate 8 million gallons of drinking water or form a slick the size of eight football fields.

What can you do?

Don't dispose of ANY hazardous wastes in drains, street, storm drains or on the ground.

Take advantage of hazardous waste days at the Town land fill to properly dispose of oil, anti-freeze, batteries, paints, solvents and pesticides.

Use products according to manufacturer's directions.

Clean up any spills of liquid hazardous wastes with kitty litter or adsorbent. Do not hose them into the street or storm drain system.

Wash your car on unpaved areas or go to the car wash.

More information - www.mass.gov/dep/toxics/index.htm

Lawn Care and Landscaping

One tenth of a pound of fertilizer reaching the Pond can grow about 2.5 pounds of weeds.

What can you do?

Do not apply fertilizers or pesticides within 15 feet of the shoreline of a pond, lake or river and use per the manufacturer's instructions in the early spring and fall, not in the summer and do not use prior to predicted rainfall.

Clean up after your pet disposing of wastes properly (toilet or trash)

Use compost or slow release fertilizers, bone or fishmeal for your lawns and landscaping in the fall - more is not better.

Mow your grass high. Leave the grass clippings on your lawn as a natural fertilizer.

Water your lawn only when the soil is dry 6" inches down

Create a vegetated buffer zone of vegetation 15 feet wide at the shoreline of ponds, lakes or rivers.

Use terracing, bark mulch, wood chips, hydro-seeding or natural ground cover to prevent erosion on steep slopes or non-vegetated areas.

Do not feed waterfowl and discourage them from grazing on your property. Ten non-migrating waterfowl contribute as much phosphorus as found in the waste of one human.

More information - www.nofamass.org

Septic Systems

The sewage from one human can promote the nutrients for many pounds of new aquatic weeds per year.

What can you do?

Have your septic system inspected and pumped, at a minimum, every 3 years so that it operates properly.

Purchase household detergents and cleaners that are low in phosphorus or contain no phosphorus.

Do not dispose of hazardous wastes in you household septic system.

Minimize your use of water

Contact the Wayland Surface Water Quality Committee at Wayland Town Hall for a copy of cost saving septic system operation and maintenance tips.

More information -

www.agnr.umd.edu/users/wye/personel/Miller/septic.html,

www.mass.gov/dep/water/wastewater/septicsy.htm